



Plant reproduction: flowers

The **stamens** are the **male** reproductive organs and these produce **pollen**.

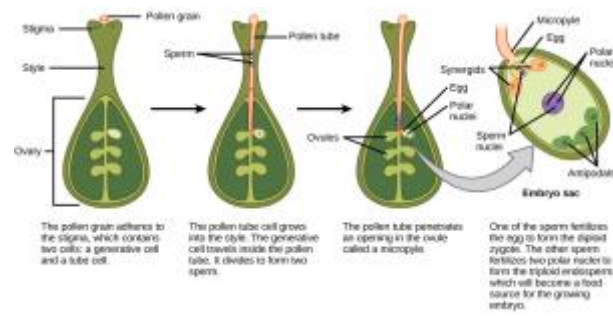


---

*How new plants grow?*

---

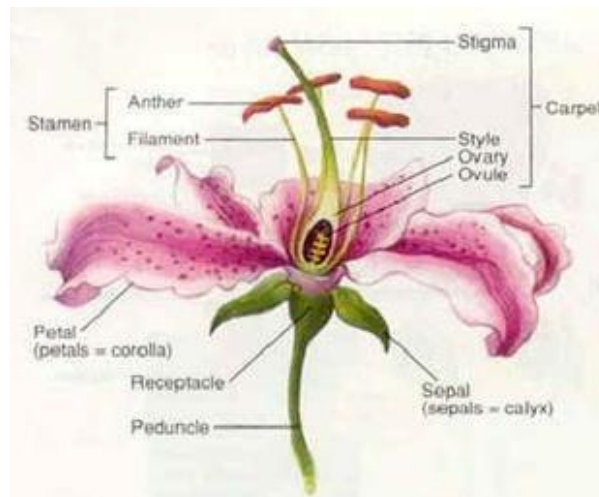
The **carpel** is the **female** reproductive organ.



*1 - The ovary produces ovules.*

*The stigma receives the pollen.*

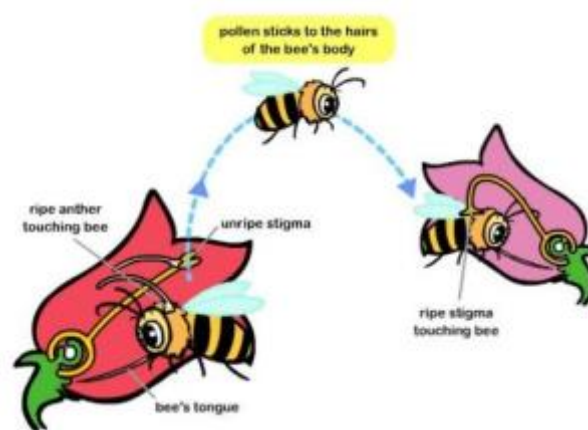
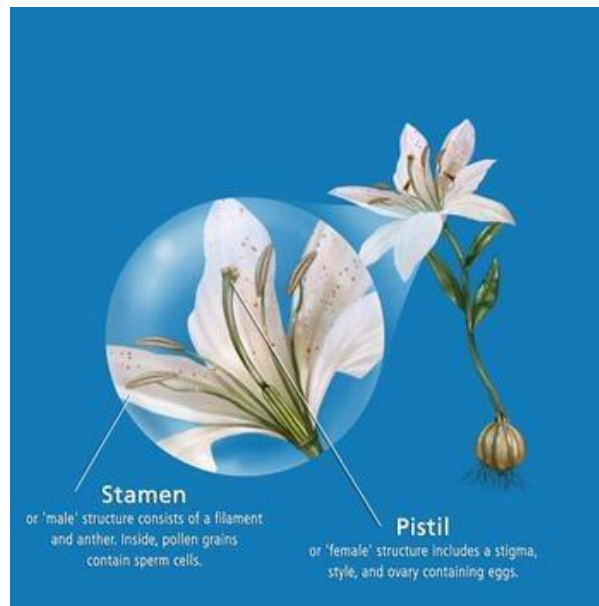
Some plants have flowers. The flower is the **reproductive organ** of a plant.



*2 - The carpel includes the stigma and the ovary.*

*The stigma receives the pollen.*

## Pollination



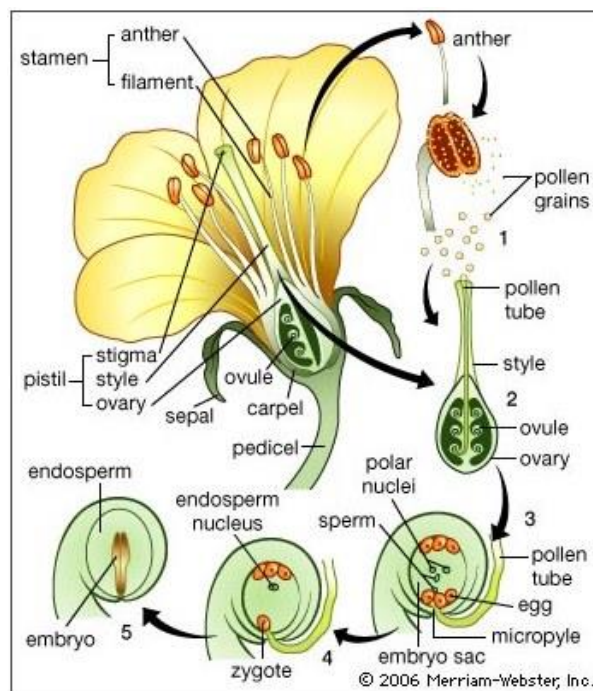
3 - In pollination the pollen travels from the stamen to the stigma.



4 - **Animal pollination** is the transfer of pollen from the stamen to the stigma of another plant by an insect or bird.



5 - **Wind pollination** involves wind blowing the pollen from one plant to another.

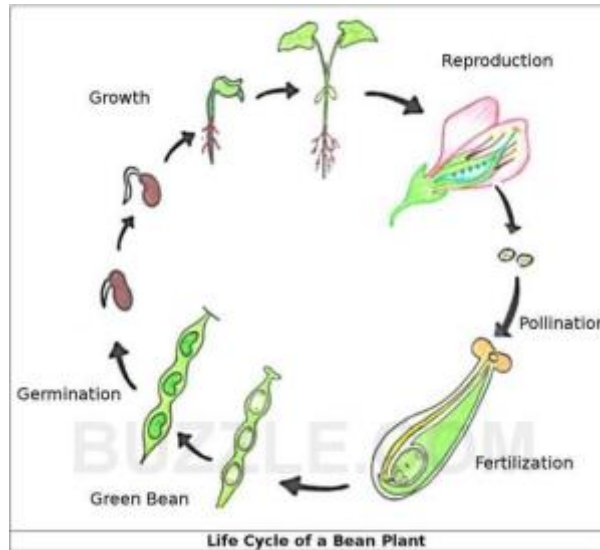


The life cycle of a flowering plant.

#### 6 - **Life cycle of a plant.**

1. *Pollen lands on the stigma.*
2. *A seed develops inside the ovary.*
3. *The ovary takes the form of a fruit and the petals fall.*
4. *The fruit falls and opens.*
5. *The seed germinates and a new plant grows.*
6. *The new plant produces flowers.*

Lyfe cycle of a plant.



7 - Life cycle of a plant. Plant reproduction.