

## Digestive system

The digestive system is made up of the gastrointestinal tract and the liver, pancreas, and gallbladder. The gastrointestinal tract is a series of organs joined in a long, twisting tube from the mouth to the anus. These organs are the mouth, esophagus, stomach, small intestine, large intestine—which includes the rectum—and anus. Food enters the mouth and passes to the anus through the hollow organs of the gastrointestinal tract. The liver, pancreas, and gallbladder are the solid organs of the digestive system. The digestive system helps the body digest food.

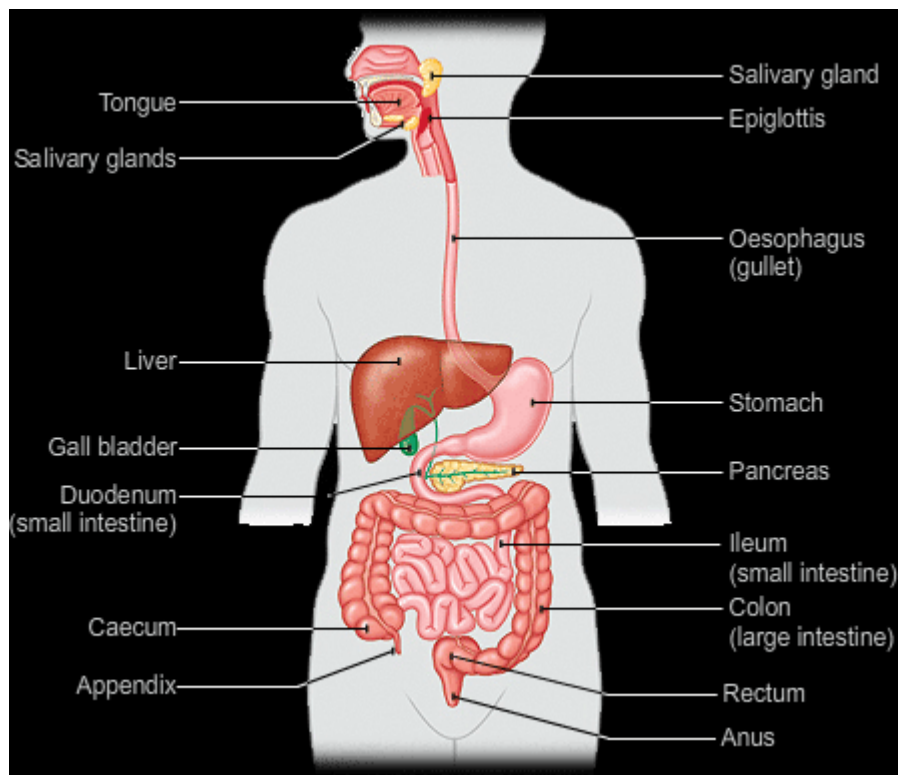


Photo credit: xtremepapers.com